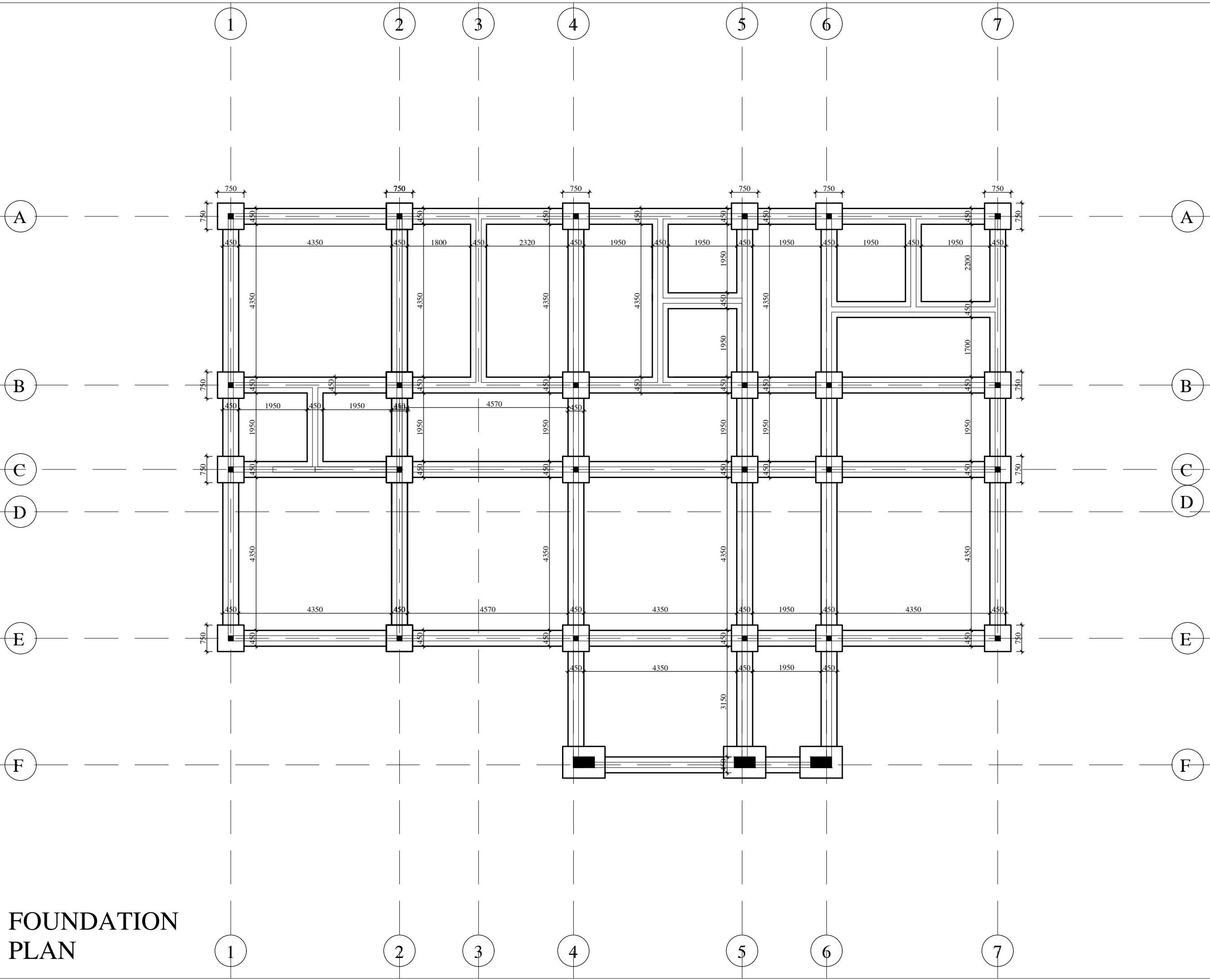


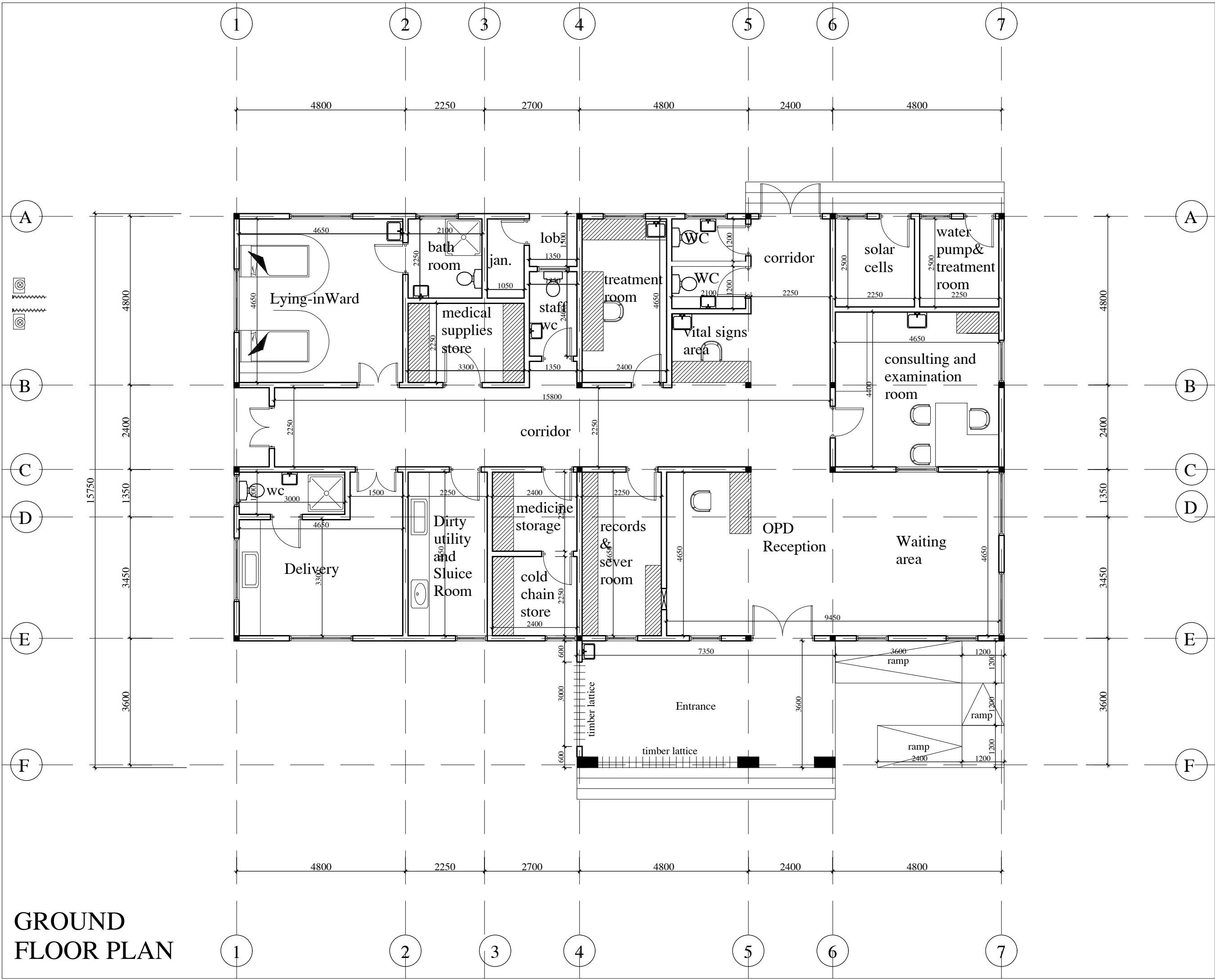
PROJECT
CHPS COMPOUND
(CLINICAL SERVICES BLOCK AND
STAFF ACCOMMODATION UNIT)

CLIENT
MINISTRY OF HEALTH

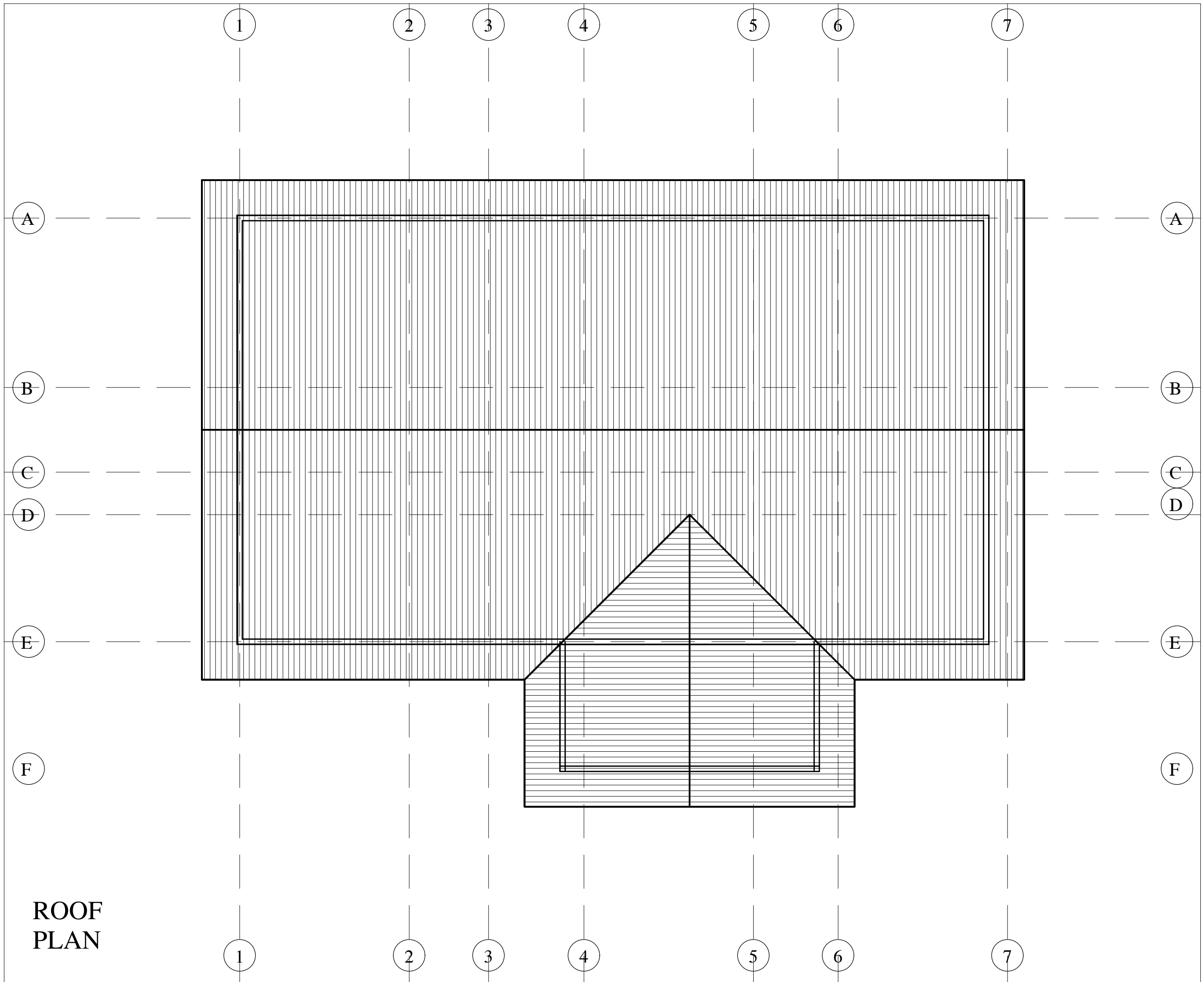
(CLINICAL SERVICES BLOCK)



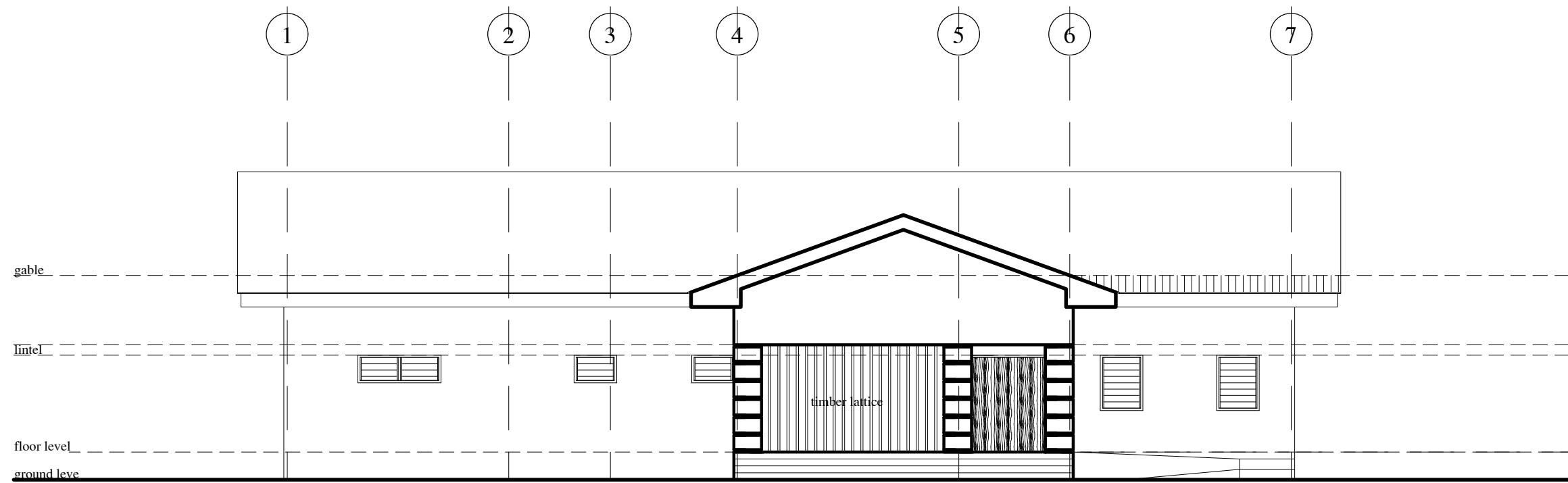
**FOUNDATION
PLAN**



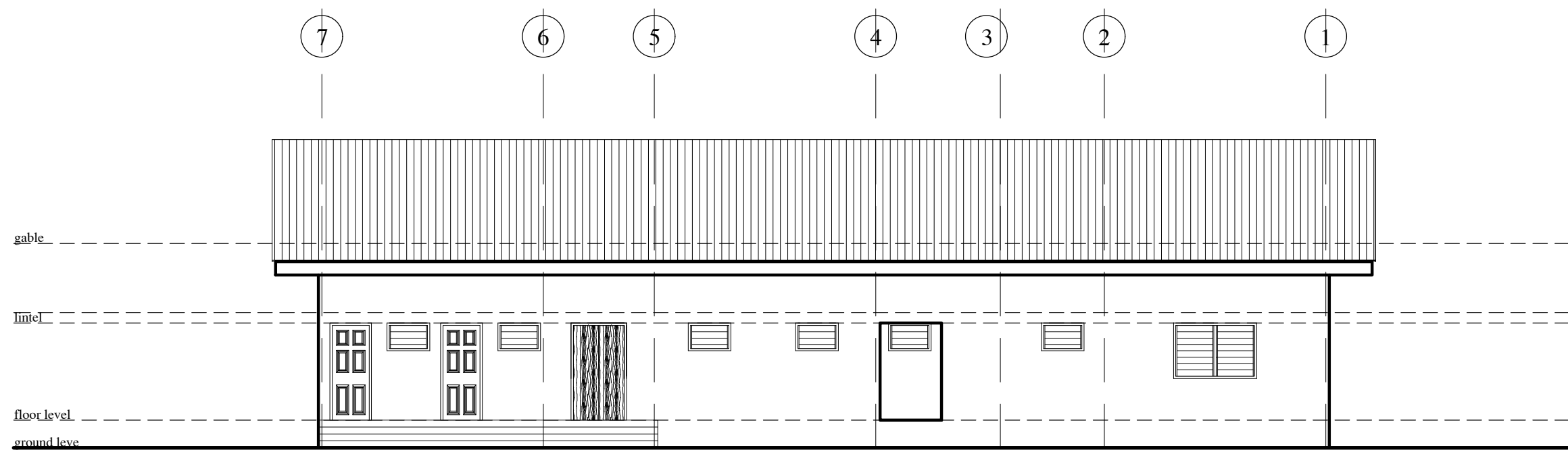
GROUND FLOOR PLAN



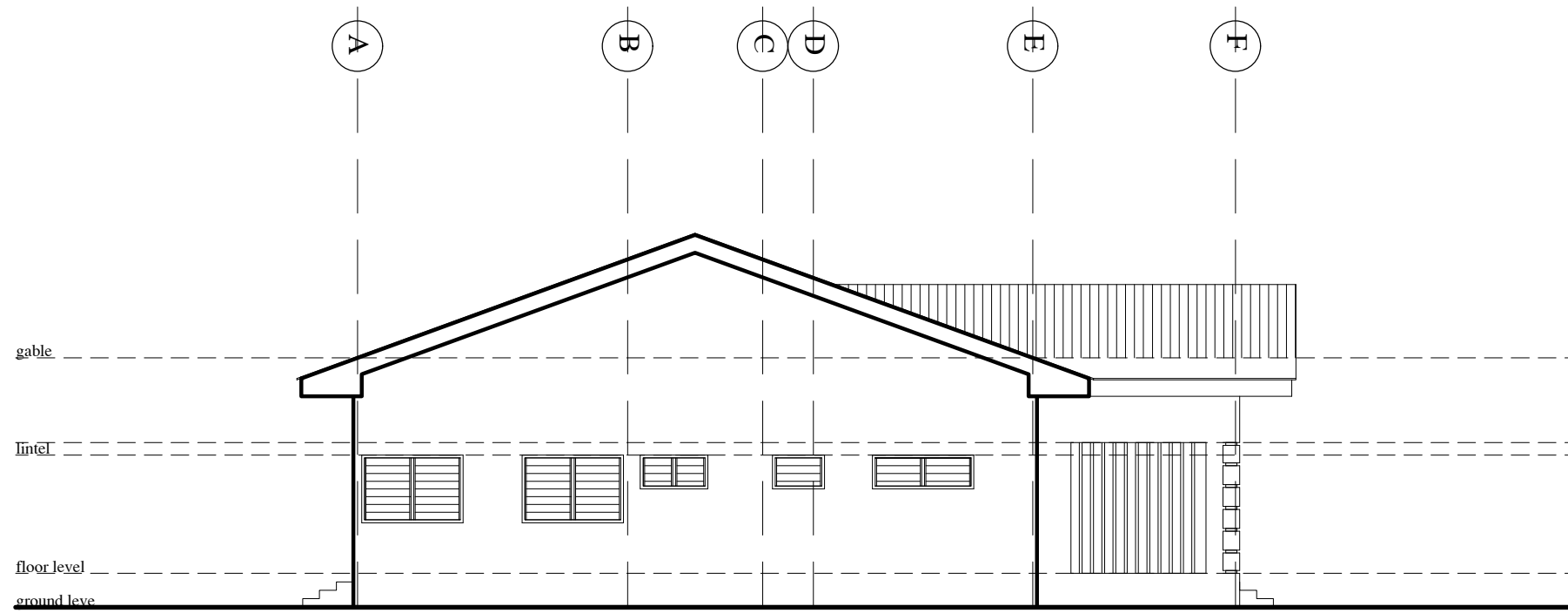
ROOF
PLAN



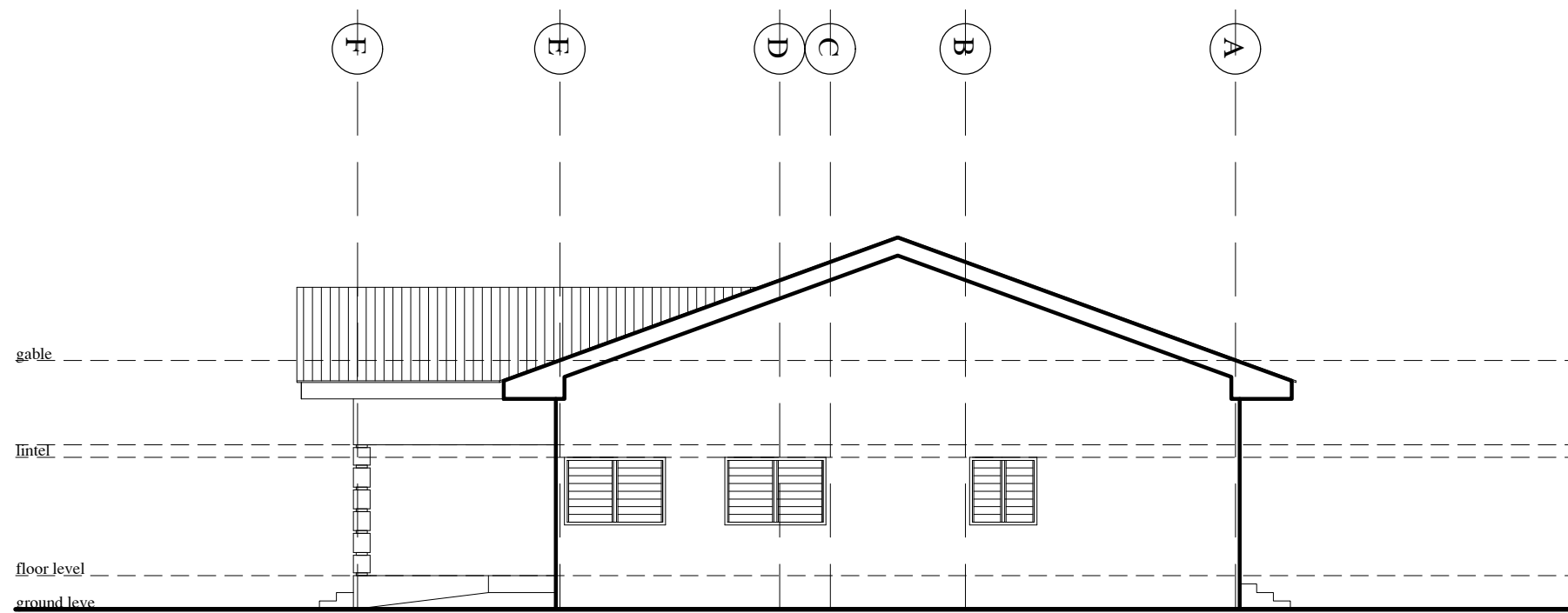
FRONT ELEVATIONS



BACK ELEVATIONS

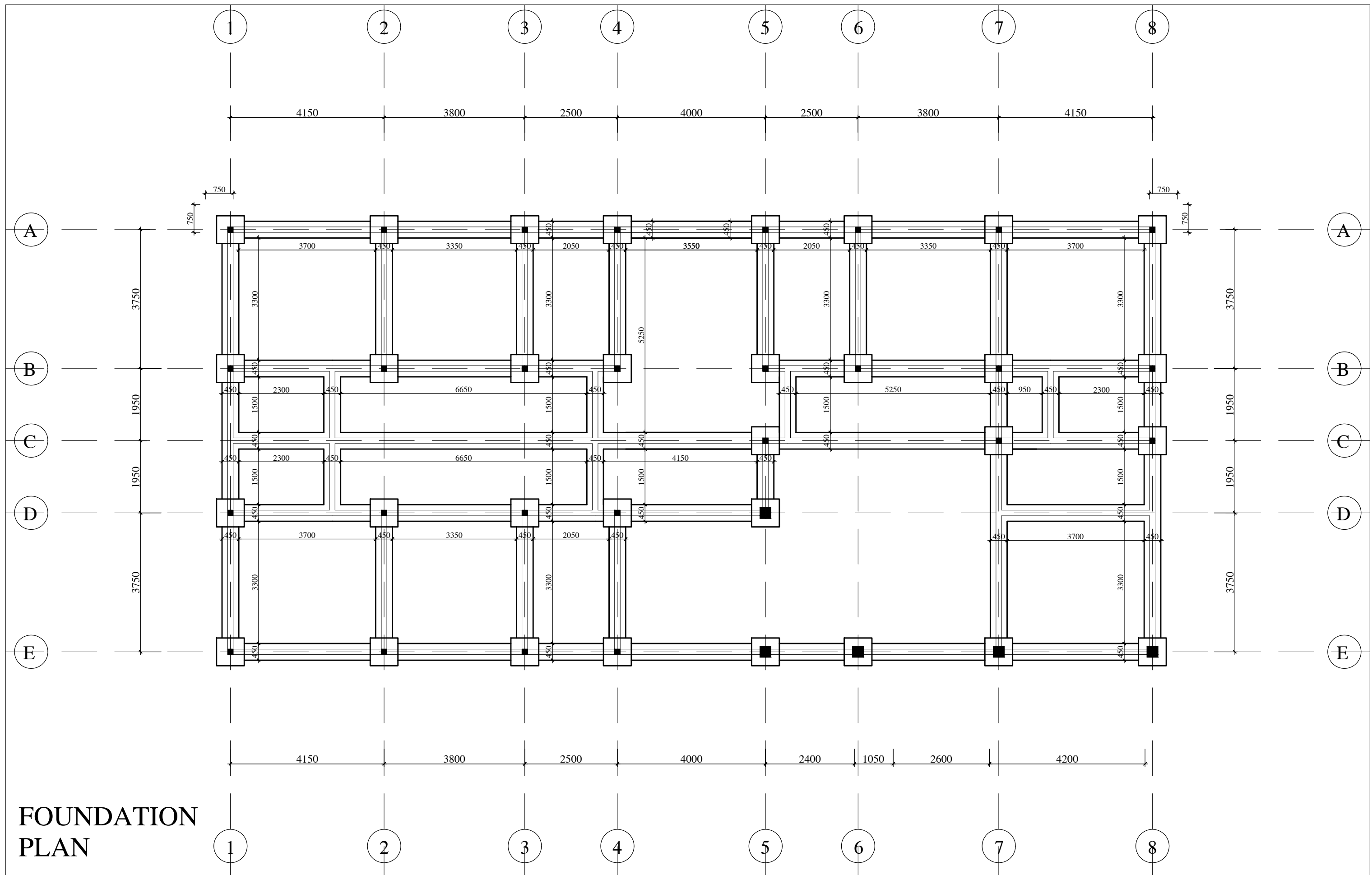


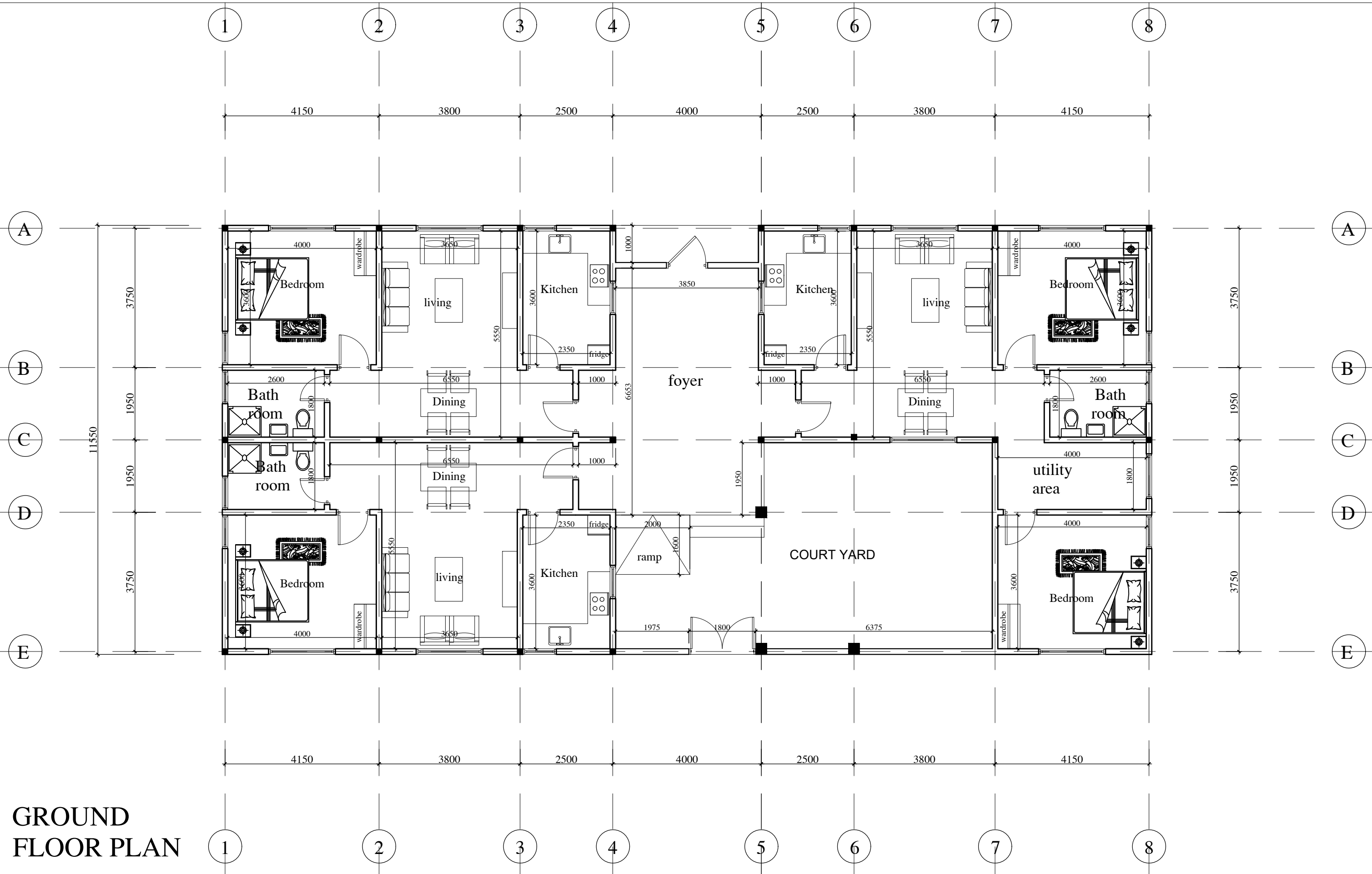
LEFT SIDE ELEVATIONS



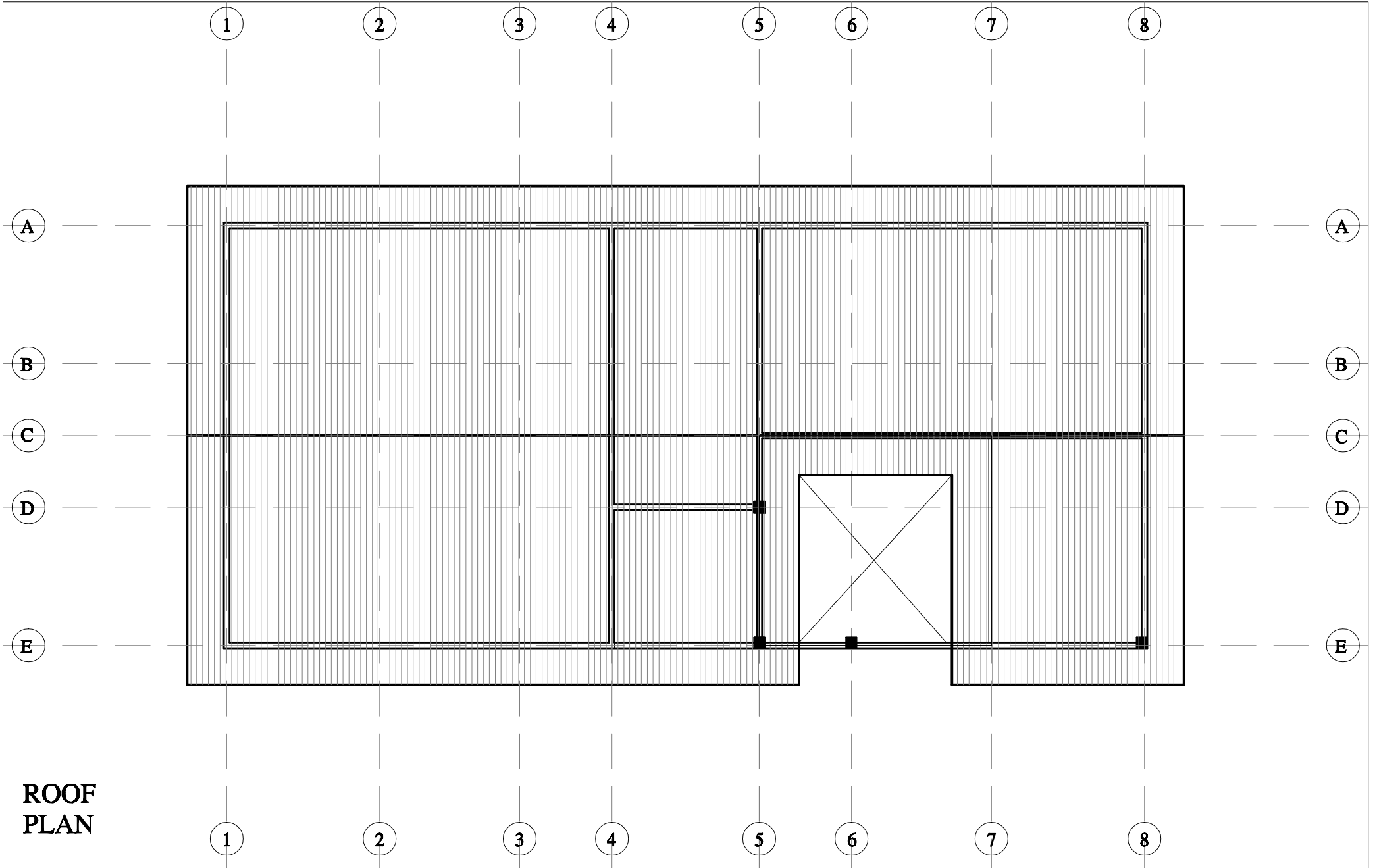
RIGHT SIDE ELEVATIONS

**STAFF
ACCOMMODATION
UNITS**

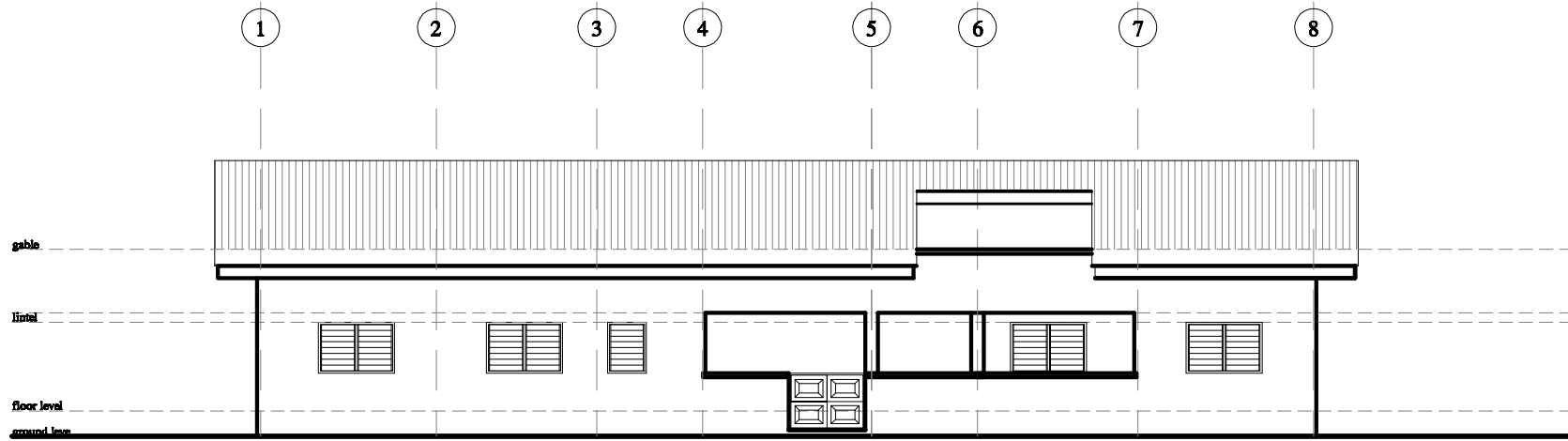




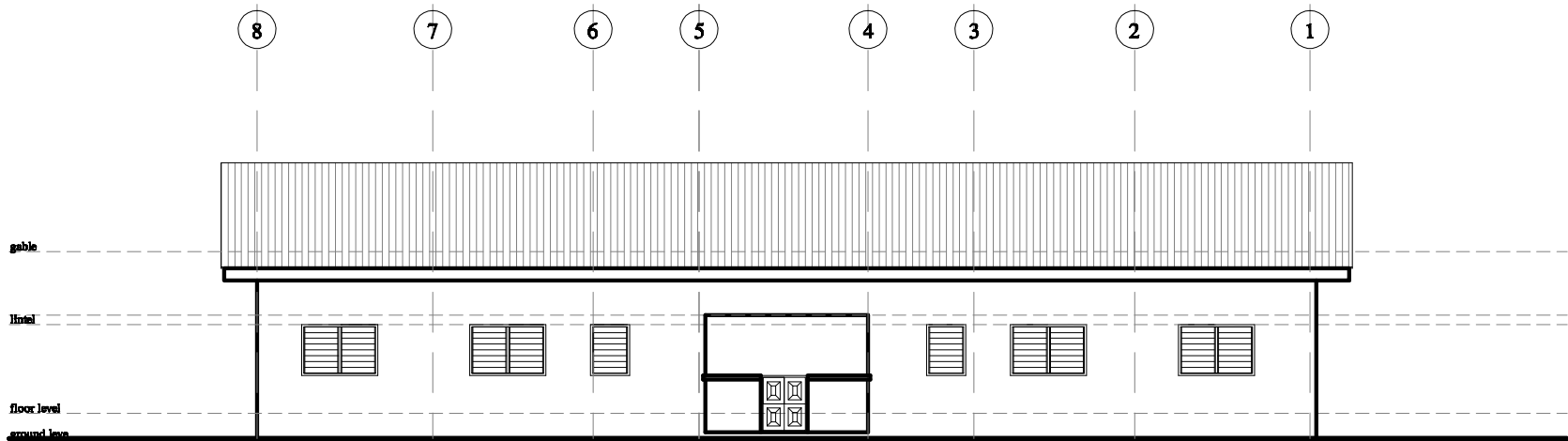
**GROUND
FLOOR PLAN**



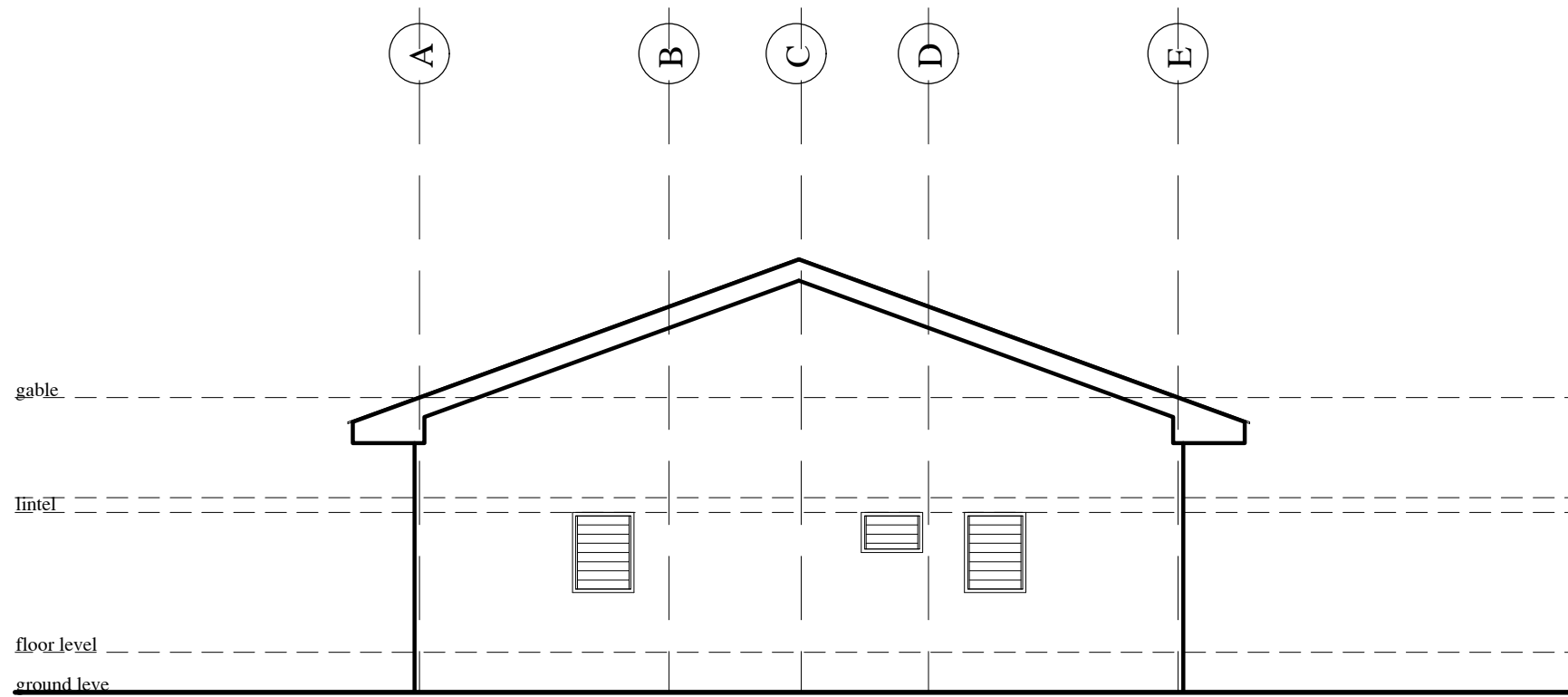
**ROOF
PLAN**



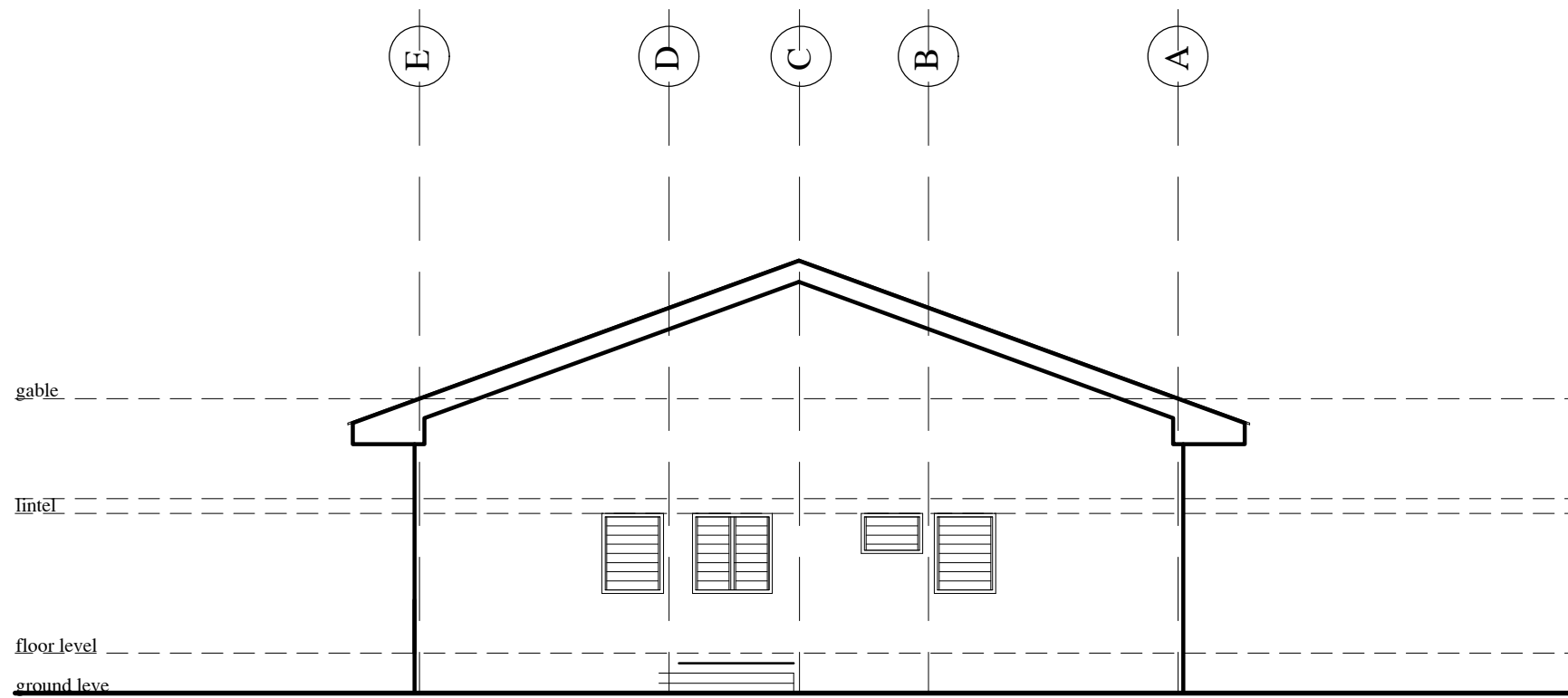
FRONT ELEVATIONS



BACK ELEVATIONS



LEFT SIDE ELEVATIONS

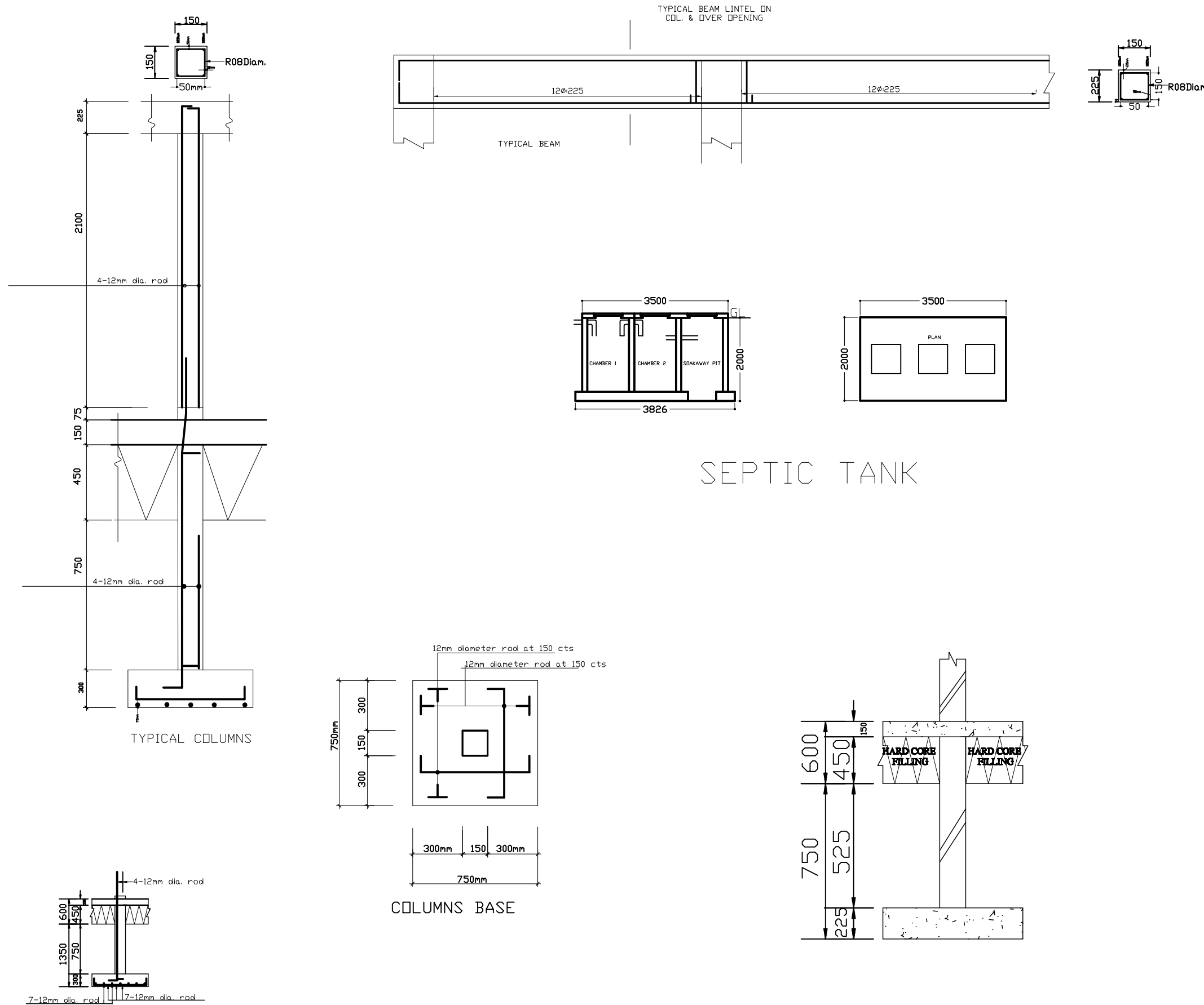


RIGHT SIDE ELEVATIONS

NOTE

Do not scale from drawing

In cases of ambiguity consult designer



Project:

CHPS COMPOUND WITH ACCOMMODATION

Client:
KETU SOUTH MUNICIPAL ASS.

Description:
REINFORCEMENT DETAILS & SEPTIC PLAN

Location:

SCALE:
1:100

DATE: JULY, 2025

DESIGNED BY:
J.K. PENIEL VENT. 0246918255

NO. 7